



G E S (GENIUS EXAM OF SCIENCE)

- Q.28 Water : Drinking :: Air :
- (a) Sailing (b) Breathing
(c) Washing (d) Bathing
- Q.29 What does a green traffic signal tell us ?
- (a) To go (b) To stop
(c) To wait (d) To run
- Q.30 Do not animals.
- (a) Love (b) Tease
(c) Care (d) Help
- Q.31 Playing with matchstick is
- (a) Harmful (b) Harmless
(c) Safe (d) Careful
- Q.32 We should not take anything from
- (a) Mother (b) Father
(c) Strangers (d) Friends
- Q.33 On rainy days we use :
- (a) Muffler (b) Sweater
(c) Raincoat (d) Woollen coat
- Q.34 Which one of the following clothes are made from the fibres of sheep and animals ?
- (a) Woollen (b) Cotton
(c) Waterproof (d) Raincoat

- Q.35 Find the odd one out :
- (a) Summer (b) Winter
(c) Spring (d) Weather
- Q.36 Clothes protect us from :
- (a) Heat (b) Cold
(c) Rain (d) All the above
- Q.37 Certain practices followed by a family are known as their :
- (a) Celebration (b) Society
(c) Customs (d) Family tree
- Q.38 A person who makes your school furniture is a :
- (a) Plumber (b) Carpenter
(c) Watchman (d) Mason
- Q.39 A shop from where we buy medicines is a shop.
- (a) Post office (b) Chemist
(c) Gift (d) Garments
- Q.40 What do you call your uncle's son ?
- (a) Brother (b) Sister
(c) Step brother (d) Cousin

1st Level Exam

CLASS
1

Maximum Marks : 100	Duration : 60 Minutes	Total Question : 40
-------------------------------	---------------------------------	-------------------------------

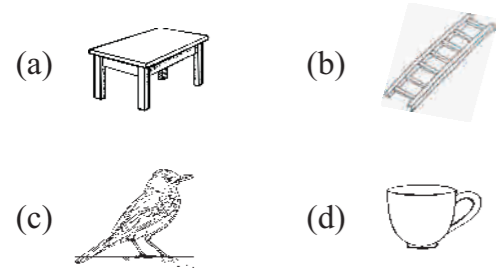
INSTRUCTION FOR THE CANDIDATES

- GEM exam is of 60 minutes duration
- There are 40 questions in the test. Each question has only one option as CORRECT.
- For filling up information about yourself on answer sheet.
- Each question of carries 2.5 marks.
- All the question are compulsory and there is no negative marking.
- Use of calculator, mobile phone & any electronic gadgets is NOT allowed.
- Write any one correct option in answer sheet.

Q.1 Which one of the following animals is largest in size ?

- (a) Cow
- (b) Dog
- (c) Sheep
- (d) Elephant

Q.2 Which one of the following is an example of living things ?



Q.3 Which of the following non-living things is made up of paper ?

- (a) Mobile
- (b) Pen
- (c) Book
- (d) Eraser

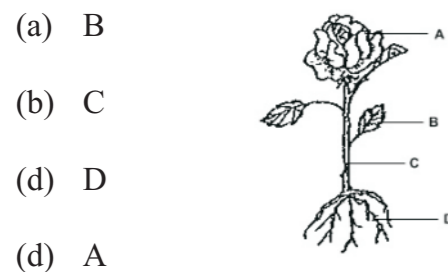
Q.4 Identify a non-living thing that you have seen in the playground.

- (a) Swing
- (b) Boat
- (c) Aeroplane
- (d) None of these

Q.5 Tall and strong plants are called :

- (a) Trees
- (b) Herbs
- (c) Shrubs
- (d) Creepers

Q.6 Which of the following represents the leaf of a plant ?



Q.7 Plants give us :

- (a) Medicine
- (b) Clothes
- (c) Fruits
- (d) All the above

Q.8 Which one of the following parts of plant is generally under the soil ?

- (a) Leaves
- (b) Roots
- (c) Stem
- (d) Flowers

Q.9 An animal that can live both on land and in water :

- (a) Fish
- (b) Crocodile
- (c) Sparrow
- (d) Tiger

Q.10 Find the odd one out :

- (a) Cow
- (b) Goat
- (c) Dog
- (d) Lion

Q.11 What is the name of the water animal given in the picture ?



- (a) Shark
- (b) Octopus
- (c) Crocodile
- (d) Hippopotamus

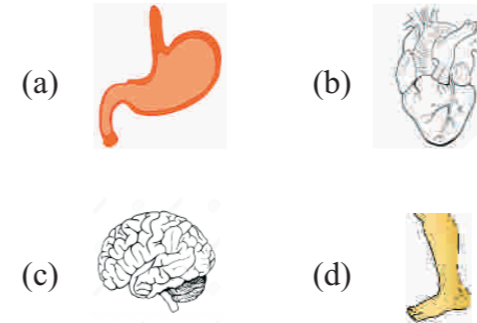
Q.12 Fishes have..... to swim in water.

- (a) Legs
- (b) Feathers
- (c) Fins
- (d) Wings

Q.13 We can smell fragrant flowers using our :

- (a) Nose
- (b) Ears
- (c) Eyes
- (d) Hands

Q.14 Which one of the following is not an internal organ ?



Q.15 Find the odd one out :

- (a) Taste
- (b) Touch
- (c) Smell
- (d) Run

Q.16 Which one of the following pair is incorrect ?

- (a) Ear - hear
- (b) Skin - smell
- (c) Tongue - taste
- (d) Eyes - sight

Q.17 Which is not a cereal ?

- (a) Rice
- (b) Green gram
- (c) Wheat
- (d) Maize

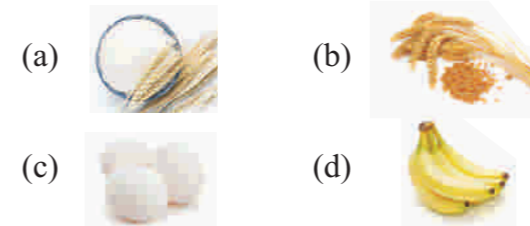
Q.18 Which of the following is not a healthy drink

- (a) Coconut water
- (b) Coca-cola
- (c) Lassi
- (d) Lemonade

Q.19 Food give us to do work.

- (a) Clothes
- (b) Energy
- (c) Vegetables
- (d) Prize

Q.20 Identify the food which we get from animals



Q.21 A house protects us from :

- (a) Rain
- (b) Cold
- (c) Heat
- (d) All the above

Q.22 A house made up of cement and bricks is called a house :

- (a) Pucca
- (b) Kutcha
- (c) Tent
- (d) Mud house

Q.23 Where are kutcha houses commonly found ?

- (a) Villages
- (b) Metro cities
- (c) Big towns
- (d) None of these

Q.24 A tent house is mainly made up of

- (a) Cement
- (b) Iron
- (c) Cloth
- (d) Glass

Q.25 Dirty water makes us :

- (a) Fit
- (b) Sick
- (c) Healthy
- (d) Smart

Q.26 Strong winds help to rotate the blades/wheels of :

- (a) Windmill
- (b) Bicycle
- (c) Ship
- (d) Car

Q.27 Moving air is called :

- (a) Wind
- (b) Rain
- (c) Fire
- (d) Water



G E S (GENIUS EXAM OF SCIENCE)

- Q.28 You need to purchase a dictionary, where will you get it from?
 (a) Grocery store (b) Book store
 (c) Dairy (d) Salon
- Q.29 We see a in the sky during the rainy season :
 (a) Stars (b) Moon
 (c) Planets (d) Rainbow
- Q.30 There are months in a year :
 (a) Ten (b) Twelve
 (c) Eight (d) Eleven
- Q.31 We celebrate Christmas in :
 (a) Summer (b) Winter
 (c) Autumn (d) Spring
- Q.32 Boiling makes water
 (a) Coloured (b) Dirty
 (c) Impure (d) Clean
- Q.33 We wear light coloured cotton clothes in :
 (a) Winter (b) Summer
 (c) Rainy season (d) None of these
- Q.34 Silkworm grows on leaves.
 (a) Mango (b) Cotton
 (c) Mulberry (d) Jute

- Q.35 According to changing, we wear clothes.
 (a) Food (b) Weather
 (c) House (d) Syllabus
- Q.36 Clothes protect us from :
 (a) Heat (b) Dust
 (c) Cold (d) All the above
- Q.37 Biggest planet of our solar system is :
 (a) Jupiter (b) Neptune
 (c) Saturn (d) Uranus
- Q.38 We live on which planet ?
 (a) Venus (b) Mars
 (c) Earth (d) Jupiter
- Q.39 The planet which is known as the evening star is :
 (a) Earth (b) Mars
 (c) Venus (d) Saturn
- Q.40 The earth rotates on its own
 (a) Box (b) Border
 (c) Scale (d) Axis

1st Level Exam
CLASS
2

Maximum Marks : 100	Duration : 60 Minutes	Total Question : 40
------------------------	--------------------------	------------------------

INSTRUCTION FOR THE CANDIDATES

- GEM exam is of 60 minutes duration
- There are 40 questions in the test. Each question has only one option as CORRECT.
- For filling up information about yourself on answer sheet.
- Each question of carries 2.5 marks.
- All the question are compulsory and there is no negative marking.
- Use of calculator, mobile phone & any electronic gadgets is NOT allowed.
- Write any one correct option in answer sheet.

- Q.1 are our green friends :
- (a) Water (b) Plants
(c) Both a and b (d) None of these
- Q.2 When we eat spinach, we eat which part of the plant ?
- (a) Roots (b) Leaves
(c) Fruits (d) Stem
- Q.3 plant leaves are used to treat common cold and cough :
- (a) Mango (b) Rose
(c) Tulsi (d) Pea
- Q.4 Which part of the plant is known as 'Kitchen of the Plant' ?
- (a) Root (b) Leaves
(c) Stem (d) Flower
- Q.5 Cactus grows :
- (a) In cold places (b) Near the sea
(c) In deserts (d) In water
- Q.6 An eatable flower is :
- (a) Rose flower
(b) Sunflower
(c) Cauliflower
(d) Marigold flower
- Q.7 Which one of the following is used as a spice ?
- (a) Pepper (b) Clove
(c) Cumin (d) All the above

- Q.8 Henna leaves are used as
- (a) Fruit (b) Dye
(c) Food (d) None of above
- Q.9 Cows are kept in :
- (a) Shed (b) Stable
(c) Pen (d) Cave
- Q.10 Which one of the following animals helps in keeping the jungle clean by eating flesh of dead animals :
- (a) Vulture (b) Horse
(c) Elephant (d) Lion
- Q.11 We keep in our home for our security ?
- (a) Camel (b) Dog
(c) Rabbit (d) Sheep
- Q.12 Egg-Laying animals are :-
- (a) Hen (b) Duck
(c) Geese (d) All of these
- Q.13 We should eat a diet.
- (a) Balanced (b) Heavy
(c) Light (d) Poor
- Q.14 Our body needs to grow and for energy.
- (a) Toys (b) Food
(c) Diseases (d) Cartoons

- Q.15 Pulses are enriched with
- (a) Energy (b) Fats
(c) Proteins (d) All the above
- Q.16 Which of the following is a junk food ?
- (a) Banana (b) Milk
(c) Rice (d) Pizza
- Q.17 Find the odd one out :
- (a) Hand (b) Legs
(c) Brain (d) Neck
- Q.18 How many bones are there in a human body ?
- (a) 203 (b) 204
(c) 206 (d) 210
- Q.19 We have senses.
- (a) 2 (b) 4
(c) 5 (d) 6
- Q.20 pumps blood to various parts of the body.
- (a) Lungs (b) Brain
(c) Heart (d) Eyes
- Q.21 We should not touch with wet hands.
- (a) Pencil
(b) Plastic bucket
(c) Wooden desk
(d) Electric switches

- Q.22 Staying away from harm is
- (a) Harmful (b) Dangerous
(c) Safety (d) Electric shock
- Q.23 The immediate medical help given to an injured person is called :
- (a) Ambulance (b) First-aid
(c) Injury (d) Bandage
- Q.24 clothes should be worn while lighting crackers :
- (a) Cotton (b) Polyester
(c) Nylon (d) Terylene
- Q.25 People who live near our homes are our :
- (a) Relatives (b) Friends
(c) Neighbours (d) Classmates
- Q.26 ATM refers to :
- (a) Automatic Total Money
(b) Automatic Taller Money
(c) Automated Teller Machine
(d) Automatic Table Money
- Q.27 You want to gift a bouquet to your friend. To whom will you go ?
- (a) Postman (b) Florist
(c) Gardener (d) Gatekeeper


G E S (GENIUS EXAM OF SCIENCE)

Q.29 Distance from Delhi to Jaipur is measured in :

- (a) Metre (b) Centimetre
(c) Kilometre (d) Millimetre

Q.30 What is the standard unit of length ?

- (a) Kilometre (b) Metre
(c) Centimetre (d) Millimetre

Q.31 Which instrument is used to measure the hotness or coldness of an object ?

- (a) Balance (b) Ruler
(c) Tape (d) Thermometer

Q.32 Find the odd one out :

- (a) Handspan (b) Ruler
(c) Cubit (d) Footspan

Q.33 Which one of the following is the oldest mode of transport ?

- (a) Train (b) Car
(c) Bullock cart (d) Aeroplane

Q.34 motion will be travelled by a person sitting in a giant wheel.

- (a) Irregular (b) Circular
(c) Linear (d) Zig zag

Q.35 Which means of transport among the following is eco-friendly ?

- (a) Car (b) Scooter
(c) Bicycle (d) Aeroplane

Q.36 We receive SMS on :

- (a) Mobile phone (b) Printer
(c) Radio (d) Fax machine

Q.37 Which gas do plants absorb from air for making their food ?

- (a) Oxygen
(b) Carbon-di-oxide
(c) Nitrogen
(d) All the above

Q.38 Which soil is best for the growth of plants ?

- (a) Clayey (b) Loamy
(c) Sandy (d) None of these

Q.39 This soil is used for making pots and toys.

- (a) Sandy (b) Clayey
(c) Loamy (d) None of these

Q.40 The uppermost fertile layer of soil is :

- (a) Sand (b) Humus
(c) Gravel (d) Clay

1st Level Exam

CLASS

3

Maximum Marks :
100

Duration :
60 Minutes

Total Question :
40

INSTRUCTION FOR THE CANDIDATES

- GEM exam is of 60 minutes duration
- There are 40 questions in the test. Each question has only one option as CORRECT.
- For filling up information about yourself on answer sheet.
- Each question carries 2.5 marks.
- All the questions are compulsory and there is no negative marking.
- Use of calculator, mobile phone & any electronic gadgets is NOT allowed.
- Write any one correct option in answer sheet.

Q.1 The part of the plant that helps to fix it in the soil :

- (a) Stem (b) Flower
(c) Root (d) Fruit

Q.2 The green colour of the leaf is due to :

- (a) Mineral (b) Chlorophyll
(c) Fat (d) Water

Q.3 Plants growing on land are :

- (a) Aquatic plants
(b) Terrestrial plants
(c) Fixed plants
(d) Floating plants

Q.4 are our green friends.

- (a) Animals (b) Plants
(c) Birds (d) None of these

Q.5 The largest animal in the world :

- (a) Octopus (b) Dolphin
(c) Starfish (d) Blue Whale

Q.6 Birds that cannot fly :

- (a) Parrot (b) Ostrich
(c) Pigeon (d) Sparrow

Q.7 Which of the following animal is a carnivore ?

- (a) Deer (b) Lion
(c) Elephant (d) Cow

Q.8 Which of the following is not an insect ?

- (a) Beetle (b) Cockroach
(c) Bee (d) Fish

Q.9 Which part of a bird's body helps it to change direction ?

- (a) Head (b) Tail
(c) Beak (d) Claws

Q.10 Find the odd one out :

- (a) Parrot (b) Pigeon
(c) Peacock (d) Ostrich

Q.11 Which one of the following is the only mammal that can fly ?

- (a) Ostrich (b) Spider
(c) Kangaroo (d) Bat

Q.12 House of a bird is known as :

- (a) Nest (b) Den
(c) Kennel (d) Aquarium

Q.13 Which system gives shape to our body ?

- (a) Nervous system
(b) Skeletal system
(c) Excretory system
(d) Circulatory system

Q.14 Heart is an organ of :

- (a) Excretory system
(b) Nervous system
(c) Circulatory system
(d) Digestive system

Q.15 Find the odd one out :

- (a) Brain (b) Spinal cord
(c) Nerves (d) Kidney

Q.16 This organ is a part of digestive system through which undigested part of food is excreted out.

- (a) Stomach (b) Small intestine
(c) Oesophagus (d) Anus

Q.17 We should always walk on the :

- (a) Footpath
(b) Busy road
(c) Middle of the road
(d) All of these

Q.18 Elbow fracture is related to :

- (a) Ear (b) Bone
(c) Nail (d) Eye

Q.19 Do not board or get down from a bus.

- (a) Damaged bus (b) Moving
(c) Stationary (d) All the above

Q.20 While playing a game we should :

- (a) Leave when we loose
(b) Follow the rules of the game
(c) Fight for our turn
(d) Not do anything

Q.21 I can exist in all three states of matter. Who am I ?

- (a) Milk (b) Water
(c) Sugar (d) Bottle

Q.22 Which among the following is not a state of matter ?

- (a) Solid (b) Liquid
(c) Gas (d) Ash

Q.23 State of matter changing from liquid to solid is called :

- (a) Freezing (b) Evaporation
(c) Melting (d) Condensation

Q.24 Water vapour is a :

- (a) Solid (b) Gas
(c) Liquid (d) None of these

Q.25 The sun is a huge ball of :

- (a) Air (b) Fire
(c) Sand (d) Hot water

Q.26 Craters are the present on the surface of Moon.

- (a) Holes (b) Walls
(c) Mountains (d) Stones

Q.27 Moon is known as of earth.

- (a) Planet (b) Star
(c) Satellite (d) None of these

Q.28 Which one of the following is not an Indian astronomer ?

- (a) Bhaskara (b) Varahamihir
(c) Isaac Newton (d) Aryabhata



G E S (GENIUS EXAM OF SCIENCE)

Q.30 Use a stool or ladder to reach something kept at a :

- (a) Height (b) Chair
- (c) Table (d) None of these

Q.31 Prevention is better than :

- (a) Disease (b) Curse
- (c) Poison (d) Cure

Q.32 Do not accept anything, especially eatables offered by a :

- (a) Friend (b) Stranger
- (c) Relative (d) None of these

Q.33 What does rotation of the earth causes ?

- (a) Day and night (b) Seasons
- (c) Both of these (d) None of these

Q.34 The earth is called the planet.

- (a) Dwarf (b) Blue
- (c) Hot (d) Red

Q.35 The outermost layer of the earth is called :

- (a) Crust (b) Mantle
- (c) Core (d) Axis

Q.36 The highest known mountain in the solar system, Olympus Mons is situated on :

- (a) Venus (b) Mars
- (c) Earth (d) Mercury

Q.37 The line at which the earth and sky seem to meet is called the :

- (a) Horizon (b) Equator
- (c) Axis (d) Orbit

Q.38 The poisonous gas released by industries is :

- (a) Oxygen (b) Nitrogen
- (c) Sulphur dioxide (d) Hydrogen

Q.39 What is cutting down of trees on a large scale called ?

- (a) Afforestation (b) Deforestation
- (c) Recycle (d) Plantation

Q.40 Landfill is a :

- (a) Landscape (b) Aquatic habitat
- (c) Dumping place (d) Tourist place

1st Level Exam
CLASS
4

Maximum Marks : 100	Duration : 60 Minutes	Total Question : 40
-------------------------------	---------------------------------	-------------------------------

INSTRUCTION FOR THE CANDIDATES

1. GEM exam is of 60 minutes duration
2. There are 40 questions in the test. Each question has only one option as CORRECT.
3. For filling up information about yourself on answer sheet.
4. Each question of carries 2.5 marks.
5. All the question are compulsory and there is no negative marking.
6. Use of calculator, mobile phone & any electronic gadgets is NOT allowed.
7. Write any one correct option in answer sheet.

- Q.1 The leaves have tiny pores called
- (a) Veins (b) Stomata
(c) Midrib (d) Stalk
- Q.2 The flattened part of a leaf is called :
- (a) Vein (b) Lamina
(c) Stalk (d) Midrib
- Q.3 In desert plants, leaves are modified into spines to prevent the loss of:
- (a) Food (b) Water
(c) Oxygen (d) Colour
- Q.4 World Environment Day is celebrated on :
- (a) 5 April (b) 5 June
(c) 5 October (d) 5 May
- Q.5 Which one of the following animals is an arboreal animal?
- (a) Cow (b) Monkey
(c) Fish (d) Frog
- Q.6 Long period of summer sleep is called :
- (a) Hibernation (b) Aestivation
(c) Camouflage (d) None of these
- Q.7 An animal whose colour merges with its surroundings is
- (a) Vulture (b) Chameleon
(c) Leech (d) Deer
- Q.8 Which of the following stores fat in their hump?
- (a) Dolphin (b) Cat
(c) Camel (d) Lizard

- Q.9 Which of the following techniques is used to preserve pickles?
- (a) Freezing (b) Salting
(c) Dehydration (d) Sweetening
- Q.10 Bread, Wheat and Potato are rich in :
- (a) Fats (b) Carbohydrates
(c) Vitamins (d) Proteins
- Q.11 The other name for body-building food is :
- (a) Roughage (b) Minerals
(c) Fats (d) Proteins
- Q.12 Which organ produces bile juice?
- (a) Mouth (b) Liver
(c) Stomach (d) Pancreas
- Q.13 Which of these is a soluble substance?
- (a) Sand (b) Stone
(c) Sugar (d) Chalk powder
- Q.14 Solution of water and milk is a :
- (a) Solid-liquid solution
(b) Liquid-gas
(c) Liquid-solid
(d) Liquid-liquid solution
- Q.15 Matter is made up of tiny particles called :
- (a) Solids (b) Gases
(c) Molecules (d) Liquids

- Q.16 Water freezes at :
- (a) 100°C (b) 0°C
(c) 200°C (d) 10°C
- Q.17 A ball thrown upwards falls down due to :
- (a) Friction
(b) Gravitational force
(c) Muscular force
(d) Magnetic force
- Q.18 A push or pull applied on a body is called :
- (a) Energy (b) Work
(c) Force (d) None of these
- Q.19 A pair of scissors is an example of :
- (a) Wedge (b) Inclined plane
(c) Lever (d) Screw
- Q.20 is used to draw water from wells.
- (a) Inclined plane (b) Pulley
(c) Screw (d) Wedge
- Q.21 Sea breeze blows towards :
- (a) Sea (b) Land
(c) Sky (d) Snow
- Q.22 Tiny drops of moisture on grass and leaves is called :
- (a) Dew (b) Fog
(c) Frost (d) Hail

- Q.23 When storm takes place with lightening and thunder, it is called :
- (a) Breeze (b) Thunderstorm
(c) Wind (d) Air
- Q.24 A blanket of air around the earth is called :
- (a) Wind (b) Atmosphere
(c) Ionosphere (d) Exosphere
- Q.25 Which one of the following is a synthetic fibre?
- (a) Wool (b) Cotton
(c) Nylon (d) All of these
- Q.26 Which one of the following protects woollen clothes from insects?
- (a) Rose leaves (b) Peepal leaves
(c) Curry leaves (d) Neem leaves
- Q.27 Which of these does not absorb sweat?
- (a) Cotton (b) Wool
(c) Polyester (d) Jute
- Q.28 Oil and Grease stains on the clothes can be removed by :
- (a) Soap (b) Water
(c) Petrol (d) Powder
- Q.29 Apply an cream on the burnt area.
- (a) Fairness (b) Antiseptic
(c) Jelly (d) Liquid



G E S (GENIUS EXAM OF SCIENCE)

- Q.28 causes climate changes.
- (a) Global warming (b) Air
(c) Water (d) Soil
- Q.29 Which of the following is not a natural disaster?
- (a) Earthquake (b) Floods
(c) Poverty (d) Drought
- Q.30 Undersea earthquake sometimes causes :
- (a) Drought (b) Flood
(c) Tsunami (d) None of these
- Q.31 Sudden shaking of a part of the earth is called a/an
- (a) Volcano (b) Earthquake
(c) Epicentre (d) Focus
- Q.32 Which among the following is not a part of a volcano?
- (a) Crater (b) Vent
(c) Lava (d) Tidal wave
- Q.33 A shadow is always in colour.
- (a) White (b) Black
(c) Yellow (d) Pink

- Q.34 In sound waves do not travel :
- (a) Solids (b) Liquids
(c) Vacuum (d) Gases
- Q.35 Unit of measuring sound is :
- (a) Hertz (b) Decible
(c) Metre (d) Newton
- Q.36 How many colours are there in a white light ?
- (a) Seven (b) Two
(c) Three (d) Five
- Q.37 Which planet was placed in the group of dwarf planet in 2006 ?
- (a) Mars (b) Venus
(c) Pluto (d) Uranus
- Q.38 Recognizable pattern formed by groups of stars :
- (a) Satellite (b) Constellation
(c) Planet (d) Meteorite
- Q.39 Which was the first Indian Satellite ?
- (a) Rohini (b) INSAT
(c) EDUSAT (d) Aryabhata
- Q.40 Rising and falling of water level in the sea is called :
- (a) Movement (b) Tides
(c) Space (d) Foam

1st Level Exam

CLASS
5

Maximum Marks : 100	Duration : 60 Minutes	Total Question : 40
-------------------------------	---------------------------------	-------------------------------

INSTRUCTION FOR THE CANDIDATES

- GEM exam is of 60 minutes duration
- There are 40 questions in the test. Each question has only one option as CORRECT.
- For filling up information about yourself on answer sheet.
- Each question of carries 2.5 marks.
- All the question are compulsory and there is no negative marking.
- Use of calculator, mobile phone & any electronic gadgets is NOT allowed.
- Write any one correct option in answer sheet.

Q.1 If we want to grow a new Bryophyllum plant, we need to search its buds on the :

- (a) Roots (b) Stem
(c) Leaves (d) Seeds

Q.2 store food for the baby plant :

- (a) Stems (b) Roots
(c) Cotyledone (d) Fruits

Q.3 Sugarcane reproduces by cutting :

- (a) Root (b) Stem
(c) Leaf (d) Flower

Q.4 What does a seed need for germination ?

- (a) Water (b) Air
(c) Warmth (d) All of these

Q.5 The mass movement of animals to avoid harsh environmental conditions every year is called :

- (a) Habitat (b) Adaptation
(c) Migration (d) None of these

Q.6 What are breathing organs of insects called ?

- (a) Gills (b) Lungs
(c) Spiracles (d) Skin

Q.7 Hard covering present on the body of Beetle for protection :

- (a) Scale (b) Fur
(c) Cuticle (d) Feather

Q.8 Paddle like limbs used by turtles to swim :

- (a) Fins (b) Gills
(c) Flippers (d) Scales

Q.9 Deficiency of this diet causes goitre :

- (a) Calcium (b) Iron
(c) Iodine (d) Phosphorus

Q.10 The disease caused by HIV virus is :

- (a) Plague (b) AIDS
(c) Chickenpox (d) Measles

Q.11 Fungi cause diseases such as :

- (a) Plague (b) Measles
(c) AIDS (d) Ringworm

Q.12 Excess intake of fatty foods can lead to :

- (a) Obesity (b) Allergy
(c) Weakness (d) None of these

Q.13 Anything that has mass and occupies space is called :

- (a) Solid (b) Liquid
(c) Matter (d) Gas

Q.14 Which of these is immiscible in water ?

- (a) Milk (b) Sugar
(c) Oil (d) Lemon juice

Q.15 Which of these is an example of permanent change ?

- (a) Inflating a balloon
(b) Melting of wax
(c) Ice melting to water
(d) Curdling of milk

Q.16 The gas present in pepsi is :

- (a) Neon (b) Oxygen
(c) Carbon-di-oxide (d) Argon

Q.17 The Taj Mahal is made up of :

- (a) Slate (b) Marble
(c) Granite (d) Pumice

Q.18 Metals are extracted from their :

- (a) Soil (b) Water
(c) Ores (d) None of these

Q.19 Which among the following is not a type of rock ?

- (a) Igneous (b) Sedimentary
(c) Metamorphic (d) Lava

Q.20 A scientist who studies rocks is known as a :

- (a) Zoologist (b) Geologist
(c) Botanist (d) Chemist

Q.21 Which machine consists of several simple machine ?

- (a) Knife
(b) Forceps
(c) Bottle opener
(d) Sewing machine

Q.22 reduces the friction between different parts of a machine.

- (a) Oil (b) Milk
(c) Water (d) Juice

Q.23 The unit of energy is :

- (a) Joule (b) Newton
(c) Pascal (d) Metre

Q.24 'Energy can neither be created nor be destroyed but it can be changed from one kind to another.' - is a statement of :

- (a) Law of wasting energy
(b) Law of conservation of energy
(c) Law of nature
(d) Law of gravity

Q.25 The harmful toxic substances that cause pollution are known as :

- (a) Polluters (b) Pollutants
(c) Pollutite (d) All of these

Q.26 Global warming can be reduced by increasing :

- (a) Industries (b) Vehicles
(c) Forest areas (d) Population

Q.27 Lung cancer and asthma may be caused by :

- (a) Water pollution (b) Noise pollution
(c) Air pollution (d) Soil pollution